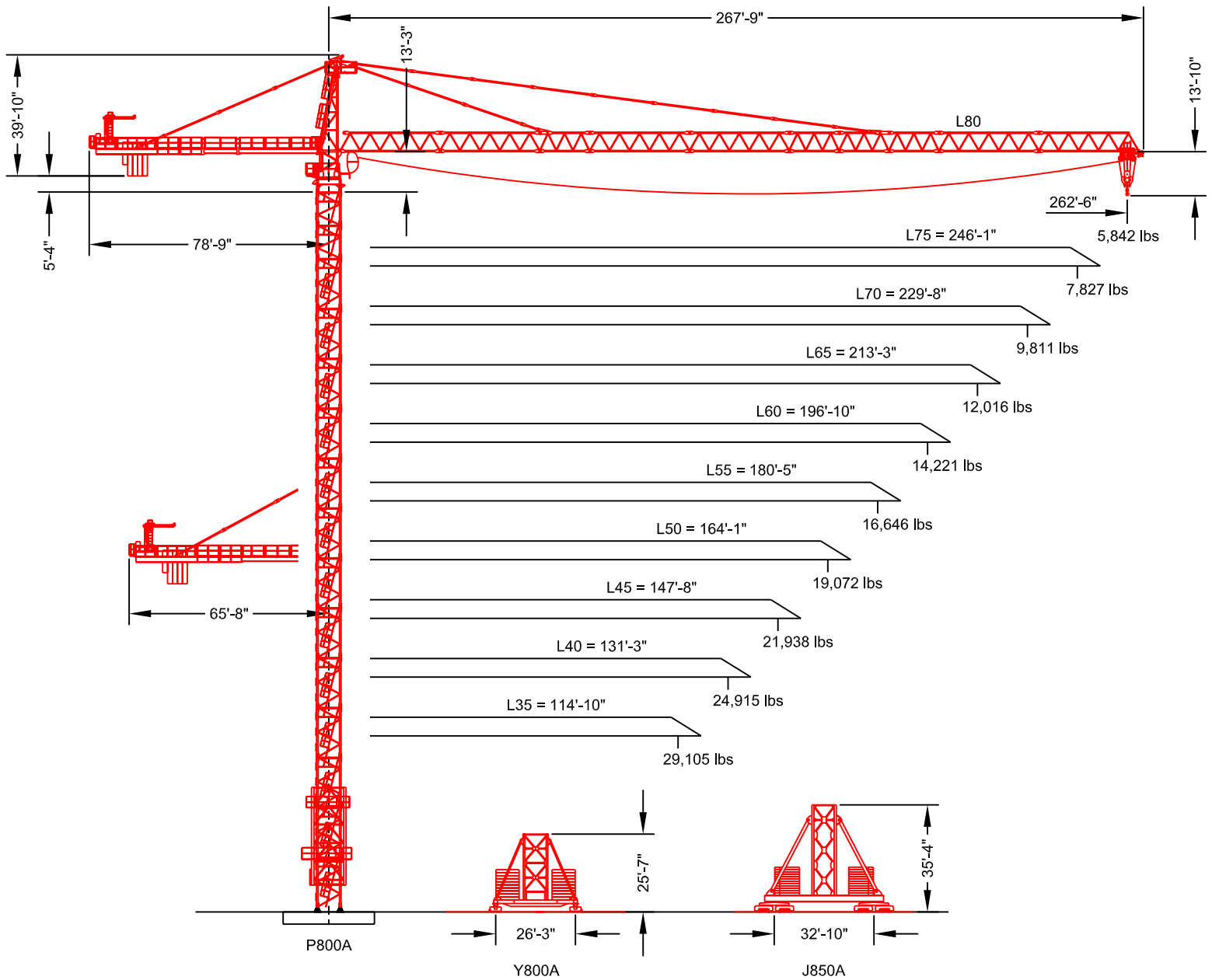


MD 485-M20

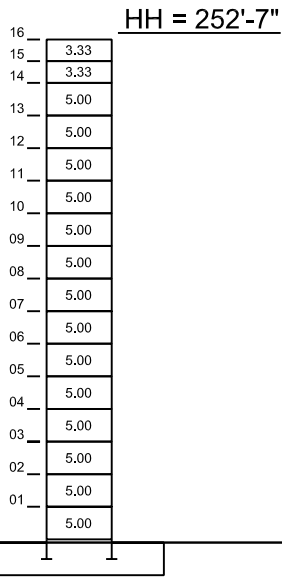
Maximum Capacity = 44,092 lbs



F.E.M. 1.001

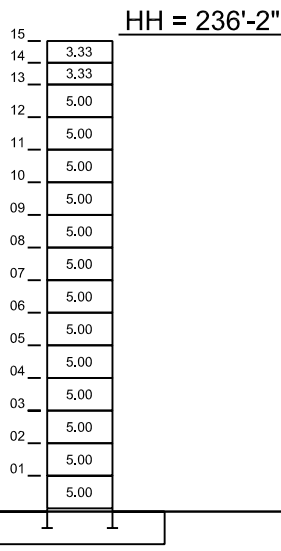
Maximum Free-Standing Hook Heights

L35 thru L55



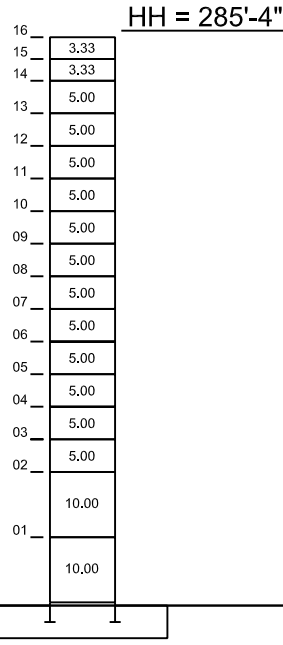
P800A

L60 thru L80



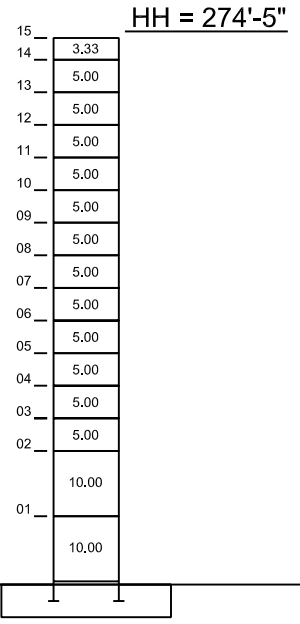
P800A

L35 thru L55



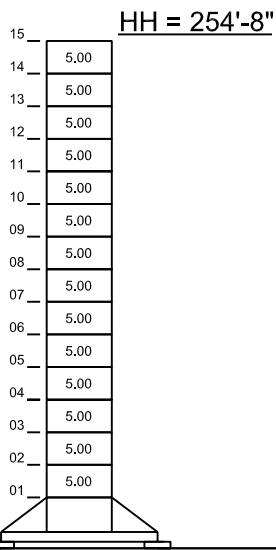
P850A

L60 thru L80



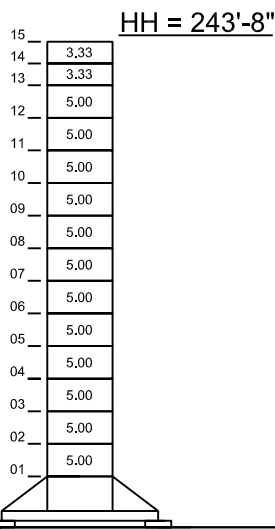
P850A

L35 thru L55



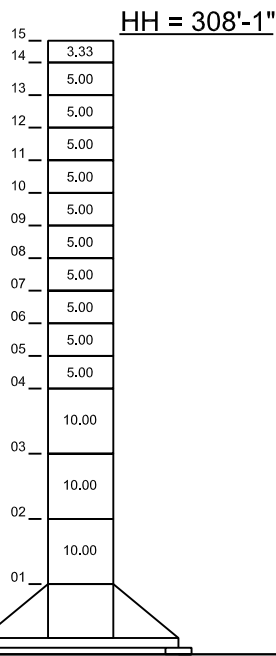
Y800A

L60 thru L80



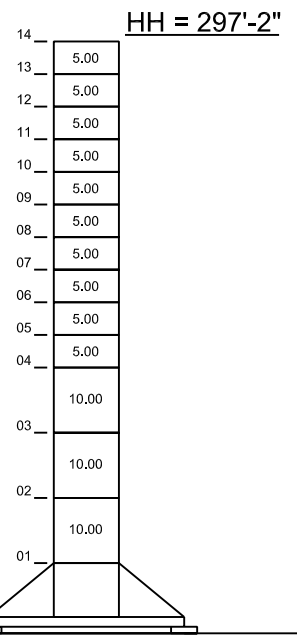
Y800A

L35 thru L55



J850A

L60 thru L80

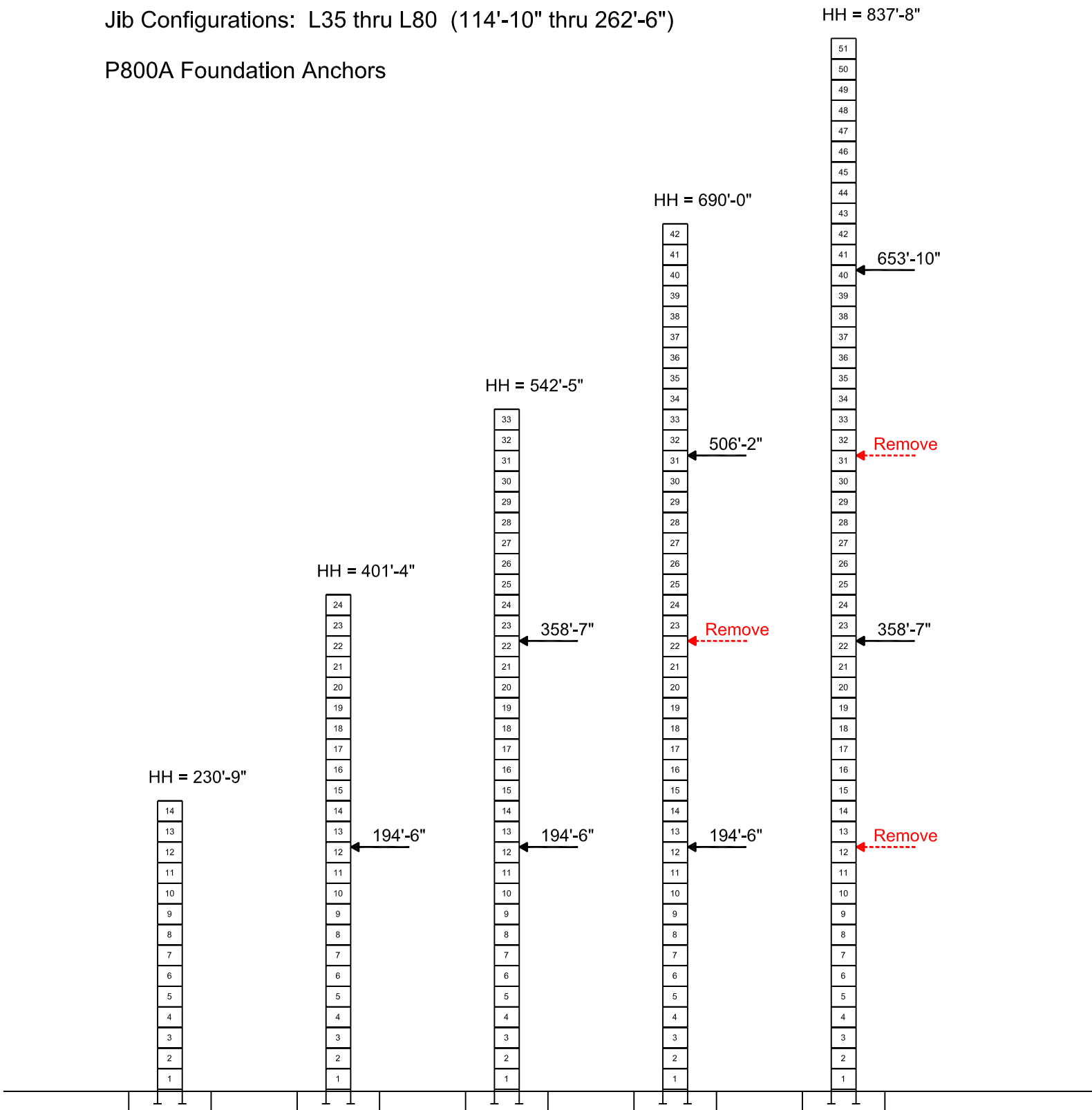


J850A

External Climbing

Jib Configurations: L35 thru L80 (114'-10" thru 262'-6")

P800A Foundation Anchors



Rated Load Chart

Capacity (lbs)

Hook Radius	Jib Lengths									
	262'-6"	246'-1"	229'-8"	213'-3"	196'-10"	180'-5"	164'-1"	147'-8"	131'-3"	114'-10"
20'-0"	44,092	44,092	44,092	44,092	44,092	44,092	44,092	44,092	44,092	44,092
30'-0"	44,092	44,092	44,092	44,092	44,092	44,092	44,092	44,092	44,092	44,092
40'-0"	44,092	44,092	44,092	44,092	44,092	44,092	44,092	44,092	44,092	44,092
50'-0"	44,092	44,092	44,092	44,092	44,092	44,092	44,092	44,092	44,092	44,092
60'-0"	39,233	44,092	44,092	44,092	44,092	44,092	44,092	44,092	44,092	44,092
70'-0"	32,732	37,666	41,619	44,092	44,092	44,092	44,092	44,092	44,092	44,092
80'-0"	27,935	32,223	35,657	38,844	41,082	42,883	43,642	44,092	44,092	44,092
90'-0"	24,250	28,041	31,077	33,894	35,874	37,466	38,137	38,621	38,667	38,591
100'-0"	21,554	24,727	27,448	29,973	31,747	33,174	33,775	34,208	34,250	34,182
110'-0"	19,200	22,046	24,502	26,790	28,396	29,689	30,234	30,627	30,664	30,603
114'-10"	18,215	21,168	23,270	25,457	26,994	28,231	28,752	29,128	29,163	29,105
120'-0"	17,251	20,072	22,063	24,154	25,622	26,804	27,302	27,661	27,695	
130'-0"	15,610	18,208	20,291	22,046	23,287	24,376	24,834	25,164	25,196	
131'-3"	15,425	17,999	20,061	21,976	23,025	24,102	24,556	24,884	24,915	
140'-0"	14,210	16,618	18,548	20,339	21,600	22,304	22,728	23,035		
147'-8"	13,272	15,552	17,379	19,076	20,270	21,232	21,641	21,938		
150'-0"	13,002	15,245	17,043	18,712	19,886	20,833	21,235			
160'-0"	11,948	14,047	15,730	17,292	18,392	19,278	19,655			
164'-1"	11,559	13,606	15,246	16,769	17,841	18,704	19,072			
170'-0"	11,020	12,994	14,576	16,044	17,077	17,910				
180'-0"	10,199	12,060	13,552	14,937	15,912	16,697				
180'-5"	10,164	12,021	13,509	14,891	15,863	16,646				
190'-0"	9,465	11,226	12,638	13,949	14,871					
196'-10"	9,006	10,705	12,067	13,331	14,221					
200'-0"	8,806	10,478	11,818	13,062						
210'-0"	8,211	9,801	11,077	12,260						
213'-3"	8,029	9,595	10,851	12,016						
220'-0"	7,671	9,188	10,404							
229'-8"	7,194	8,647	9,811							
230'-0"	7,178	8,629								
240'-0"	6,728	8,117								
246'-1"	6,473	7,827								
250'-0"	6,314									
260'-0"	5,932									
262'-6"	5,842									

Max. Load Radius										
From	10'-2"	10'-2"	10'-2"	10'-2"	10'-2"	10'-2"	10'-2"	10'-2"	10'-2"	10'-2"
To	54'-3"	61'-1"	66'-7"	71'-8"	75'-2"	78'-1"	79'-3"	80'-2"	80'-3"	80'-1"

Red line indicates the division between 4-part line and 2-part line

Mechanical Data

Function	Hoist Type	Speed vs Weight	2-part				4-part				Motor (hp)	Motor (kW)	Rope Length (ft)
			1st Gear	2nd Gear	3rd Gear	4th Gear	1st Gear	2nd Gear	3rd Gear	4th Gear			
Hoist	66 S5.0 L330	ft/min lbs	125 22,046	200 13,889	315 8,157	502 4,630					108	79	1,083
	66 S5.0 L680	ft/min lbs	125 22,046	190 13,669	302 8,157	486 4,519	62 44,092	95 27,337	151 16,314	243 9,039	108	79	2,231
	102 S5.0 L680	ft/min lbs	151 22,046	295 13,779	459 8,267	735 4,519	92 44,092	148 27,558	230 16,535	367 9,039	166	122	2,231
Trolley	10 DVF 10	ft/min	0 to 328 (20t) & 0 to 361 (10t)								14.5	11.0	
Swing	R - 16.5	rpm	1.00								3 x 9.0	3 x 6.6	

Power Requirements: 480 V (+6% or -10%) 60 Hz measured at turn table.

Amperage: 66 S5.0: 175 Amp (3 phase service with ground)

Amperage: 102 S5.0: 229 Amp (3 phase service with ground)

Note: Values given under "Rope Length" are for drum spooling capacity only. Use the following equation to calculate the required rope length.

$$RRL = DRL + (N \times RLH) + 30\text{-ft}$$

Dead Rope Lengths

RRL = Required Rope Length

DRL = Dead Rope Length

N = 2 for two-part reeving

N = 4 for four-part reeving

*RLH = Required Lifting Height.

L80	443-ft
L75	427-ft
L70	411-ft
L65	394-ft
L60	378-ft
L55	361-ft
L50	332-ft
L45	315-ft
L40	299-ft
L35	283-ft

Note: A hook height is the distance from the bottom of hook to the top of crane foundation. RLH will equal the hook height unless special lifts are made below the top of crane footing such as the crane making a pick down in a hole. The RLH in this case would be the hook height plus the depth of the hole.

Example:

A MD 485 with a hook height of 280-ft, full length jib, hook block in 4-part configuration, and a 40-ft drop from the crane foundation to the lowest point in the lay down yard.

$$RRL = 443 + (4 \times (280 + 40)) + 30 = 1,753\text{-ft}$$

Constant improvement and engineering progress make it necessary that we reserve the right to make specification, equipment, and price changes without notice. Illustrations shown may include optional equipment and accessories, and may not include all standard equipment. Product brochures are for illustration purposes only. Contact the manufacturer or consult the operation manual for specific details concerning this product.

Manitowoc Crane Company, Inc.

US Tower Crane Division
1565 Buchanan Trail East
Shady Grove, PA 17256-0021, USA

Tel: 717-597-8121

Fax: 717-597-4062

MD 485-M20

