

Potain Igo T 85 A

Product Guide



Features

- 6000 kg (13,228 lb) maximum capacity
- 1400 kg (3086 lb) capacity at 45 m (148 ft)
- 45 m (148 ft) maximum operating hook radius
- 51 m (167 ft) maximum hook height with 45 m (148 ft) jib set at 30°
- 38 m (125 ft) maximum tip hook height with jib horizontal
- Variable height lattice mast from 20 m (66 ft) to 38 m (125 ft) with optional mast inserts



Features



Optional hydraulic ballasting derrick

The optional hydraulic ballasting derrick arm is removeable and controlled by the radio remote control. This derrick can be adjusted to both radii of the Igo T 85 A as well as the radius of the Igo T 70 A.

Remote control with indicators

Standard wireless radio remote control with indicators and auxiliary control unit can be supplemented with an optional tethered joystick control unit with 30 m (98 ft) cable.



North American Highway Axle

Simplify road transport with the North American Highway Axle and adaptation kit 203. Multiple pin positions for optimal weight distribution, DOT compliance and an optional attachable 3rd axle make this an ideal solution for your transportation needs.



Cab

The optional UltraView cab bolts onto the crane at a fixed height. Controls are integrated into the cab and operator's seat provides ergonomic comforts from an aerial position.

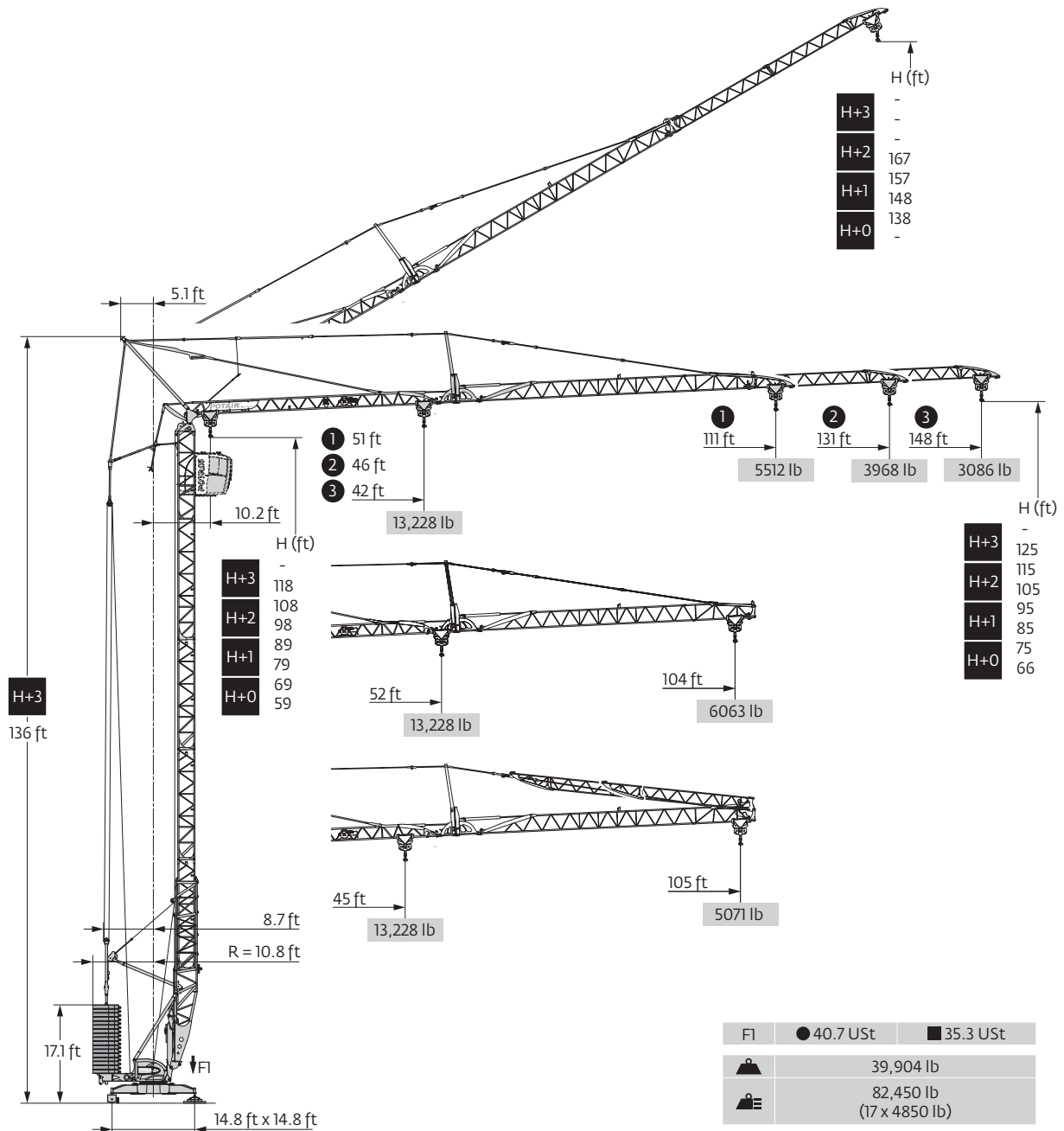


Mast inserts

Increase your working height by up to 15 m (49 ft) with optional mast inserts. Each insert is 6 m (20 ft) and provides the operator with additional heights under hook.

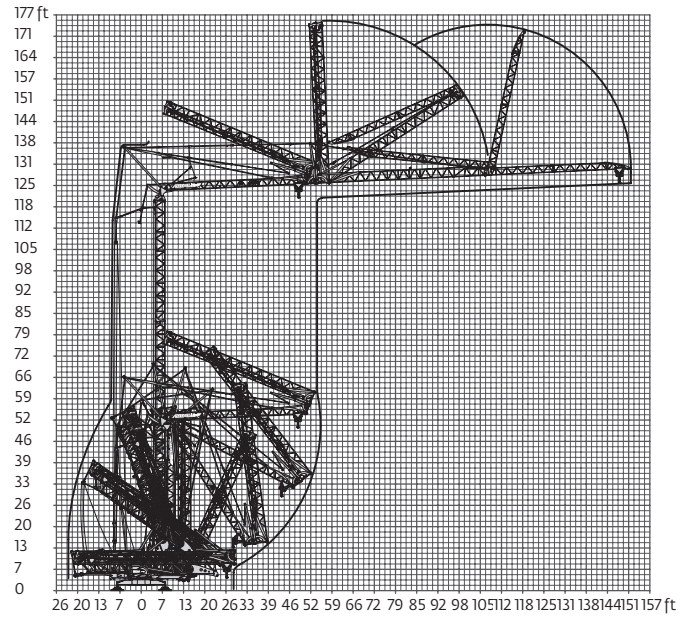
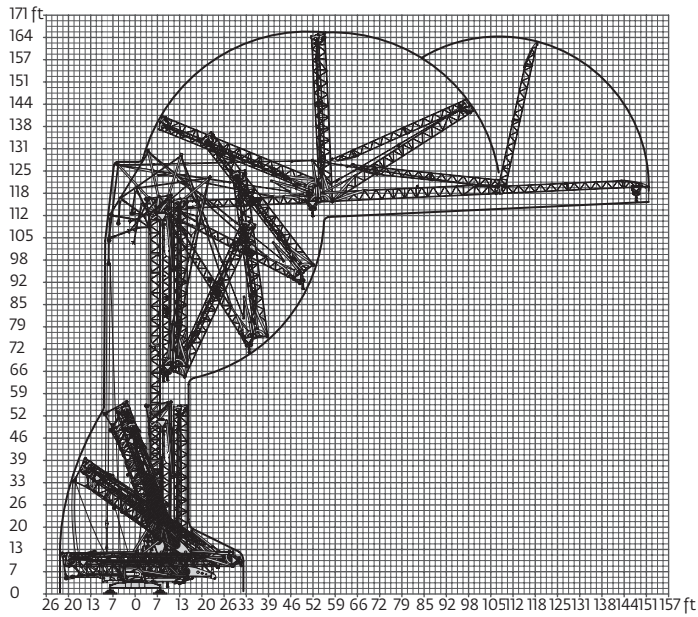


Dimensions

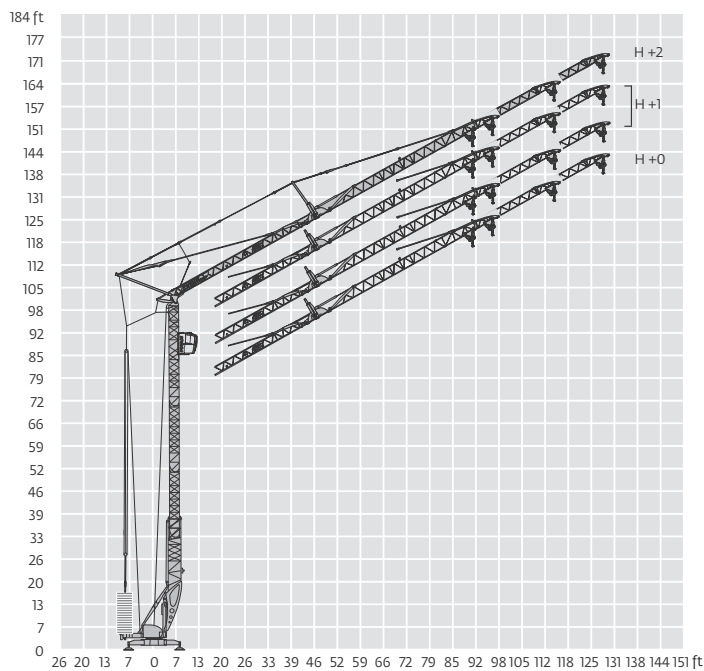


THIS CHART IS ONLY A GUIDE AND SHOULD NOT BE USED TO OPERATE THE CRANE.

Crane profile



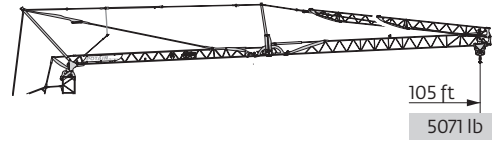
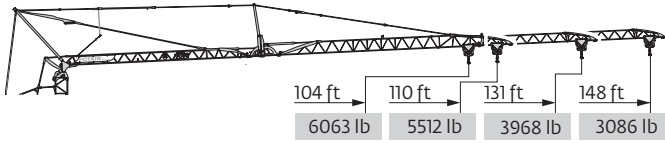
Jib raised 30°



THIS CHART IS ONLY A GUIDE AND SHOULD NOT BE USED TO OPERATE THE CRANE.

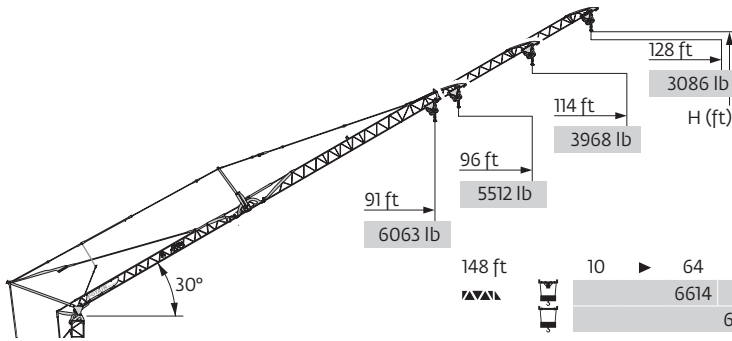
The individual crane's load chart, operating instructions and other instructional plates must be read and understood prior to operating the crane.

Load charts



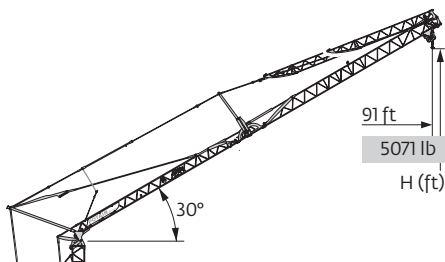
148 ft	10	▶	42	46	52	59	66	73	78	79	85	92	98	105	112	118	125	131	138	148	ft
▲▲▲			13228	11685	9921	8598	7496	6614	-	6063	5512	5071	4630	4299	3968	3638	3417	3197	2976	2756	lb
							6614	-	6063	5512	5071	4630	4299	3968	3638	3417	3197	2976	2756		lb
								6614	6504	5952	5401	4960	4630	4299	4079	3748	3527	3307	3086		lb
131 ft	10	▶	46	52	59	66	72	81	85	85	92	98	105	112	118	125	131				ft
▲▲▲			13228	11023	9700	8378	7496	6614	-	6173	5622	5181	4850	4409	4189	3858	3638				lb
							6614	-	6173	5622	5181	4850	4409	4189	3858	3638					lb
								6614	6614	6063	5622	5181	4850	4519	4189	3968					lb
111 ft	10	▶	51	59	66	72	79	85	91	95	98	105	111								ft
▲▲▲			13228	11023	9700	8598	7716	7055	6614	-	5952	5512	5181								lb
									6614	-	5952	5512	5181								lb
										6614	6283	5842	5512								lb
104 ft	10	▶	52	59	66	72	79	85	92	96	98	104									ft
▲▲▲			13228	11244	9921	8818	7937	7275	6614	-	6173	5732									lb
									6614	-	6173	5732									lb
										6614	6504	6063									lb
148 ft	10	▶	45	52	59	66	72	79	84	92	98	105									ft
▲▲▲			13228	11023	9480	8378	7496	6614	-	5622	5181	4740									lb
							6614	-	5622	5181	4740										lb
								6614	5952	5512	5071										lb

▲▲▲	148 ft
▲▲▲	131 ft
▲▲▲	111 ft
▲▲▲	104 ft
H+2	115
H+1	105
H+1	95
H+1	85
H+0	75
H+0	66



▲▲▲	148 ft	131 ft	111 ft	104 ft
H+2	167	159	-	-
H+1	157	149	-	-
H+1	148	139	129	126
H+0	138	130	119	116

148 ft	10	▶	64	68	72	79	85	92	98	105	112	118	125	128	ft
▲▲▲			6614	-	5732	5181	4630	4189	3858	3527	3307	3086	2866	2756	lb
				6614	6173	5512	5071	4630	4189	3968	3638	3417	3197	3086	lb
131 ft	10	▶	70	74	79	85	92	98	105	114				ft	
▲▲▲			6614	-	5732	5181	4740	4409	4079	3638				lb	
				6614	6173	5622	5071	4740	4409	3968				lb	
111 ft	10	▶	79	82	85	92	96							ft	
▲▲▲			6614	-	5952	5512	5181							lb	
				6614	6393	5842	5512							lb	
104 ft	10	▶	80	84	85	91								ft	
▲▲▲			6614	-	6173	5732								lb	
				6614	6504	6063								lb	

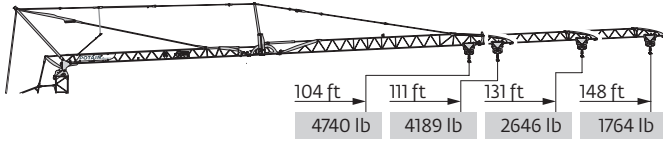


148 ft	10	▶	70	73	79	85	91	ft
▲▲▲			6614	-	5732	5181	4740	lb
				6614	6063	5512	5071	lb

▲▲▲	148 ft
▲▲▲	131 ft
H+1	-
H+1	126
H+0	116

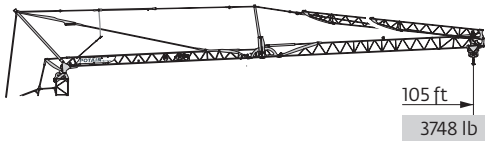
THIS CHART IS ONLY A GUIDE AND SHOULD NOT BE USED TO OPERATE THE CRANE.

Mechanisms





148 ft	10	▶	54	59	66	72	79	85	92	98	105	112	118	125	131	138	144	148	ft
▲▲▲▲	▲		6614	5952	5181	4630	4189	3748	3417	3086	2866	2646	2425	2205	2094	1940	1830	1764	lb
131 ft	10	▶	64	66	72	79	85	92	98	105	112	118	125	131	ft				
▲▲▲▲	▲		6614	6393	5732	5071	4630	4189	3858	3527	3307	3086	2866	2646	lb				
111 ft	10	▶	76	79	85	92	98	105	111	ft									
▲▲▲▲	▲		6614	6393	5732	5291	4850	4519	4189	lb									
104 ft	10	▶	79	85	92	98	104	ft											
▲▲▲▲	▲		6614	6063	5512	5071	4740	lb											

▲▲▲▲	148ft
	131 ft
	111 ft
	104 ft
H+3	-
	125

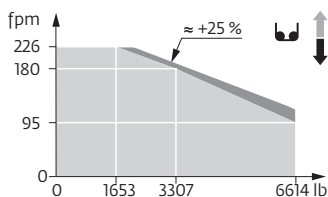


148 ft	10	▶	67	72	79	85	92	98	105	ft
▲▲▲▲	▲		6614	5952	5401	4850	4409	4079	3748	lb

480 V - 60 Hz		b d ↑					u u ↑					hp	kW	
▲	20 LVF 15 Optima	fpm	11	56	95	180	226	5	28	48	90	113	20	15
▲		lb	6614	6614	6614	3307	1653	13228	13228	13228	6614	3307		
◀▶	5 DVF 5	fpm	49 - 98 - 131 (4409 → 13,228 lb) 49 - 98 - 180 (0 → 4409 lb)									5.5	4	
⊙	RVF 151 Optima+	rpm	0 → 0.8									5.5	4	
◀●▶	TVF 324	fpm	82									2 x 4	2 x 3	

IEC 60204-32	kVA
480 V (+6% -10%) 60 Hz	 → 22 kVA  → 25 kVA

20 LVF 15 Optima



THIS CHART IS ONLY A GUIDE AND SHOULD NOT BE USED TO OPERATE THE CRANE.

The individual crane's load chart, operating instructions and other instructional plates must be read and understood prior to operating the crane.

Symbols glossary



Anemometer



Jib



Reactions out of service



Slewing radius



Ballast



Mast



Reeving



Standard equipment



Chassis



Optional hydraulic ballasting derrick



Reeving 2-part



Total ballast weight



Controls



Optional mast inserts



Reeving 4-part



Traveling



Electrical equipment



Optional transport axle sets



Required power



Trolleying



Hoisting



Options



Slewing



Weight without load, without ballast, without transport axles, with max. jib and standard height



Hydraulic equipment



Reactions in service

Manitowoc Cranes

Regional headquarters

Americas

Manitowoc, Wisconsin, USA

Tel: +1 920 684 6621

Fax: +1 920 683 6277

Shady Grove, Pennsylvania, USA

Tel: +1 717 597 8121

Fax: +1 717 597 4062

Europe, Middle East, Africa

Dardilly, France

Tel: +33 (0)4 72 18 20 20

Fax: +33 (0)4 72 18 20 00

China

Shanghai, China

Tel: +86 21 6457 0066

Fax: +86 21 6457 4955

Greater Asia-Pacific

Singapore

Tel: +65 6264 1188

Fax: +65 6862 4040

Regional offices

Americas

Brazil

Alphaville

Mexico

Monterrey

Chile

Santiago

Europe, Middle East, Africa

France

Baudemont

Cergy

Decines

Germany

Langenfeld

Italy

Lainate

Netherlands

Breda

Poland

Warsaw

Portugal

Baltar

Russia

Moscow

South Africa

Johannesburg

U.A.E.

Dubai

U.K.

Buckingham

China

Beijing

Chengdu

Guangzhou

Xian

Greater Asia-Pacific

Australia

Brisbane

Melbourne

Sydney

India

Chennai

Delhi

Hyderabad

Pune

Korea

Seoul

Philippines

Makati City

Singapore

Factories

Brazil

Passo Fundo

China

TaiAn

Zhangjiagang

France

Charlieu

Moulins

Germany

Wilhelmshaven

India

Pune

Italy

Niella Tanaro

Portugal

Baltar

Fânzeres

USA

Manitowoc

Port Washington

Shady Grove

This document is non-contractual. Constant improvement and engineering progress make it necessary that we reserve the right to make specification, equipment, and price changes without notice. Illustrations shown may include optional equipment and accessories and may not include all standard equipment.