

# Potain HDT 80

## Product Guide



### Features

- 6000 kg (13,228 lb) maximum capacity
- 1350 kg (2976 lb) maximum capacity at 45 m (148 ft)
- 45 m (148 ft) maximum operating hook radius
- 53,7 m (176 ft) maximum hook height with 45 m (148 ft) jib raised
- 34,2 m (112 ft) maximum hook height with jib horizontal

# Features



## High performance, simplicity, reliability, and unmatched productivity

Offering multiple mast heights and jib lengths, the HDT 80 allows continuous operation whether you're on a spacious job in the country or a highly congested site in the city. Along with its physical versatility, the HDT 80 features electrical operation, providing a quiet, clean lifting solution to customers who may be limited by noise and emissions regulations.

## Variable height cab

The fully enclosed variable height cab provides better visibility and optimum efficiency on the jobsite by allowing the operator to place himself at the any height on the mast for the best vantage point for operation.



## Remote control with indicators

The remote control with indicators, in combination with variable frequency drives for all main functions, allows the HDT 80 operator to easily maneuver the crane from within an approximate three-hundred foot radius.

## Transport axle sets

Simplify road transport with Potain's optional transport axle set SL122 / J215M. This trailer adjusts pneumatically and travels at speeds up to 80 km/h (50 mph). Other axle sets are available for on-site transportation.



# Contents

|  |    |
|--|----|
| Specifications                         | 4  |
| Transport                              | 5  |
| Weights                                | 6  |
| Dimensions                             | 7  |
| Load charts                            | 8  |
| Crane profile and working range        | 9  |
| Mechanisms                             | 10 |
| Metric dimension                       | 11 |
| Metric load charts                     | 12 |
| Metric crane profile and working range | 13 |
| Metric mechanisms                      | 14 |
| Symbols glossary                       | 15 |

# Specifications



## Jib

31 m (102 ft) radius standard bi-folding offsettable lattice jib. Two (2) tie bar lines with adjustable lengths allow jib to be offset 30°. Two (2) erecting speeds controlled from the remote, opening and aligning are carried out automatically by hydraulic cylinders.



## \*Optional jib extension

9 m (30 ft) removable jib extension allows radius of 40 m (131 ft). Additional 5 m (16 ft) jib extension provides a maximum radius of 45 m (148 ft).



## Mast

Galvanized telescoping three (3) section mast provides three (3) possible operating heights (measured at jib feet): 13,6 m (45 ft), 22,9 m (75 ft), 32,2 m (106 ft) mast sections lock into position automatically.



## Chassis

Outriggers swing and are locked into position. 4,5 m (14.8 ft) square outrigger spread with 3,3 m (10.8 ft) slewing radius. Slewing radius with \*cab is 3,7 m (12.1 ft). Level bubble integrated into the chassis. Outrigger pads are stowed on the crane during transport.



## \*Ballast

Ballast requirement for the crane consists of thirteen (13) slabs each weighing 2850 kg (6283 lb).



## \*Optional hydraulic ballasting derrick

Uses the hoisting winch to ballast the crane or dismantle/attach \*fifth-wheel. Stows alongside the jib during transport.



## Electrical requirement

480 volt, 60 Hz measured at the turntable. Earth rod and electric cable stored on the crane during transport.



## Reeving

SM/DM block for 2 or 4-part line. One pin removal to change between SM and DM. Pure SM1 (section of hookblock removed) is possible with gain of 100 kg (220 lb) lifting capacity.



## \*Optional Anemometer

Electronic wind speed meter (anemometer) to alert the operator of wind speed conditions. Provides selective display on the radio remote. Crane can be operated with wind gusts up to 72 km/h (45 mph).



## Controls

Wireless remote control provides information to the operator about \*\*wind speed, radius, hook height, load, and moment. Lights and buzzers alert the operator when nearing limits of operation.

Auxiliary remote attached by umbilical cord ensures continual operation in case of battery or other malfunction of the wireless remote control.



## Swing

RVF+61 slewing mechanism with maximum swing speed of 0.8 RPM. Progressive control of speed with counter-slewing possible, anti-load swinging system makes aligning the load and jib easier.



## Hoist

20 LVF 15: 20 HP variable frequency hoist with 1,5 t (1.7 USt) line pull. Three notch, progressive speed change according to the accelerating or decelerating ramps.



## Trolley

5 DVF 5: 6.5 HP variable frequency motor with 3 notches for progressive speed change according to acceleration or deceleration ramps controlled by the frequency converter.



## Hydraulic equipment

Hydraulic cylinders are used for raising the mast, unfolding the jib, and slewing the derrick. All actions are carried out by the remote control.



## \*Optional transport axle sets

Axle sets are available for both jobsite and highway applications. Jobsite axle sets for the HDT 80 are rated for 25 kp/h (15.5 mph); highway axle set is rated for 80 kp/h (50 mph).

## \*Optional equipment

\* STANDARD NORTH AMERICAN SPECIFICATION: Includes 45 m (148 ft) luffing jib, variable height cab, hydraulic ballasting derrick, high outrigger pads, wireless remote control, and Dialog Wind.

\* Top Tracing

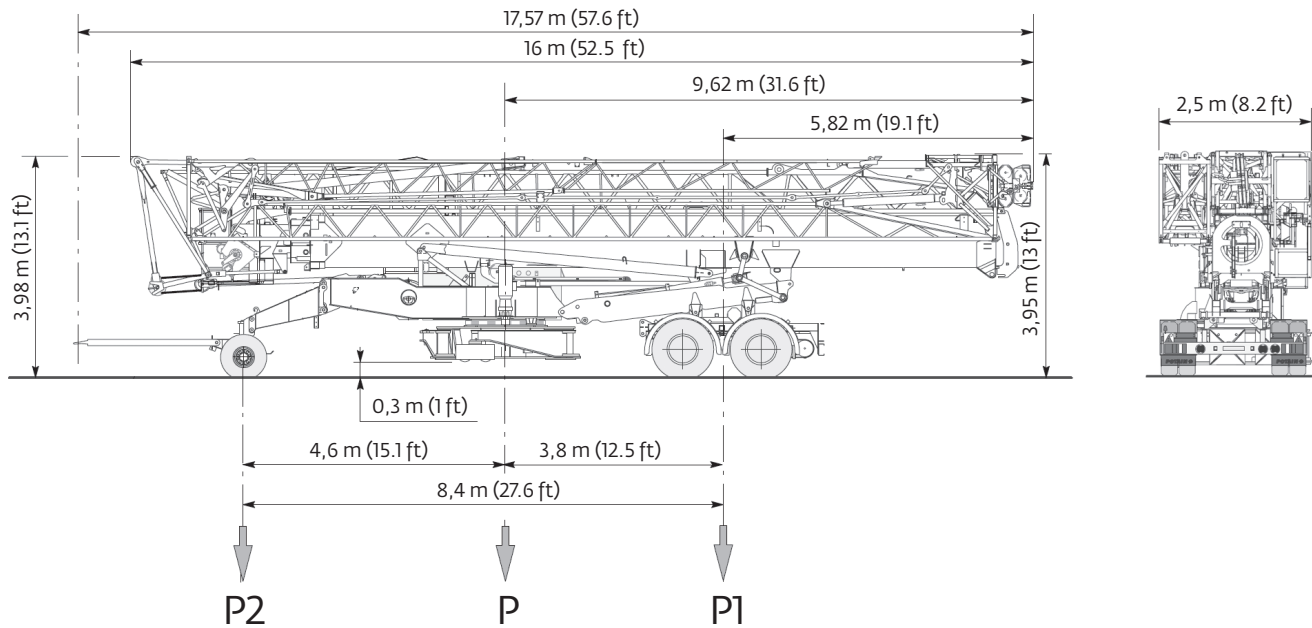
\* Wind speed alarm

\* Transport axles and kits

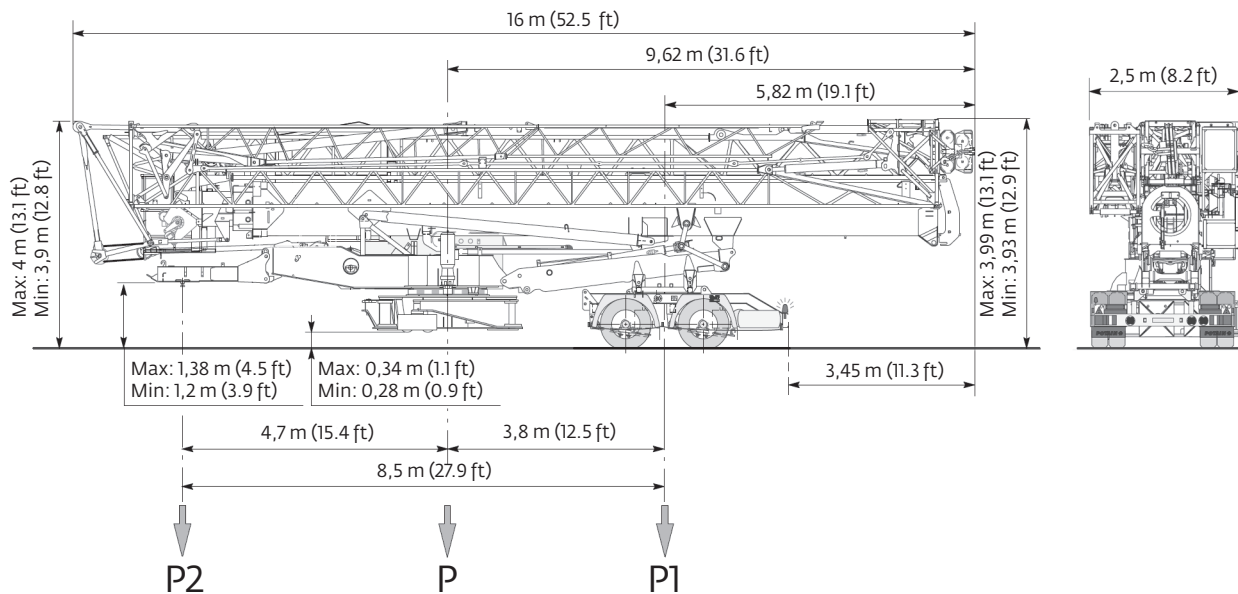
*Consult price list for additional options.*

\*Denotes optional equipment  
\*\*Requires optional anemometer

## DJ126M / S215M 25 km/h / 15.5 mph



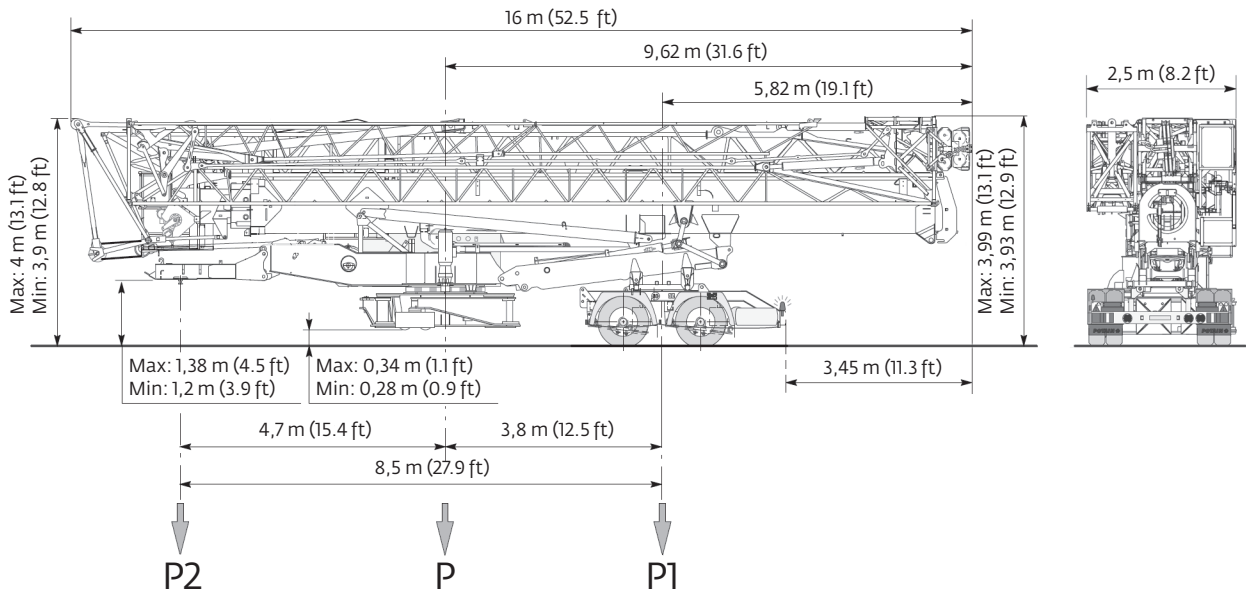
## SL121 / S215M 25 km/h / 15.5 mph



NOTE: Dimensions and weights may vary due to manufacturing tolerances.

# Weights

## SL122 / J215M 80 km/h / 50 mph



### Chassis data (in transport position)

|                | DJ126M / S215M<br>25 km/h / 15.5 mph |        | SL121 / S215M<br>25 km/h / 15.5 mph |                        | SL122 / J215M<br>80 km/h / 50 mph |                        |
|----------------|--------------------------------------|--------|-------------------------------------|------------------------|-----------------------------------|------------------------|
|                | (meters)                             | (feet) | (meters)                            | (feet)                 | (meters)                          | (feet)                 |
| Overall length | 17,57                                | 57.6   | 16                                  | 52.5                   | 16                                | 52.5                   |
| Overall height | 3,98                                 | 13.1   | Max: 4<br>Min: 3,9                  | Max: 13.1<br>Min: 12.8 | Max: 4<br>Min: 3,9                | Max: 13.1<br>Min: 12.8 |
| Overall width  | 2,5                                  | 8.2    | 2,5                                 | 8.2                    | 2,5                               | 8.2                    |
| Overhang       | 5,82                                 | 19.1   | 5,82                                | 19.1                   | 5,82                              | 19.1                   |

### Weights

Crane weight less counterweight: 23 400 kg 51,587 lb

Crane weight for operation (13 slabs): 37 050 kg 81,680 lb

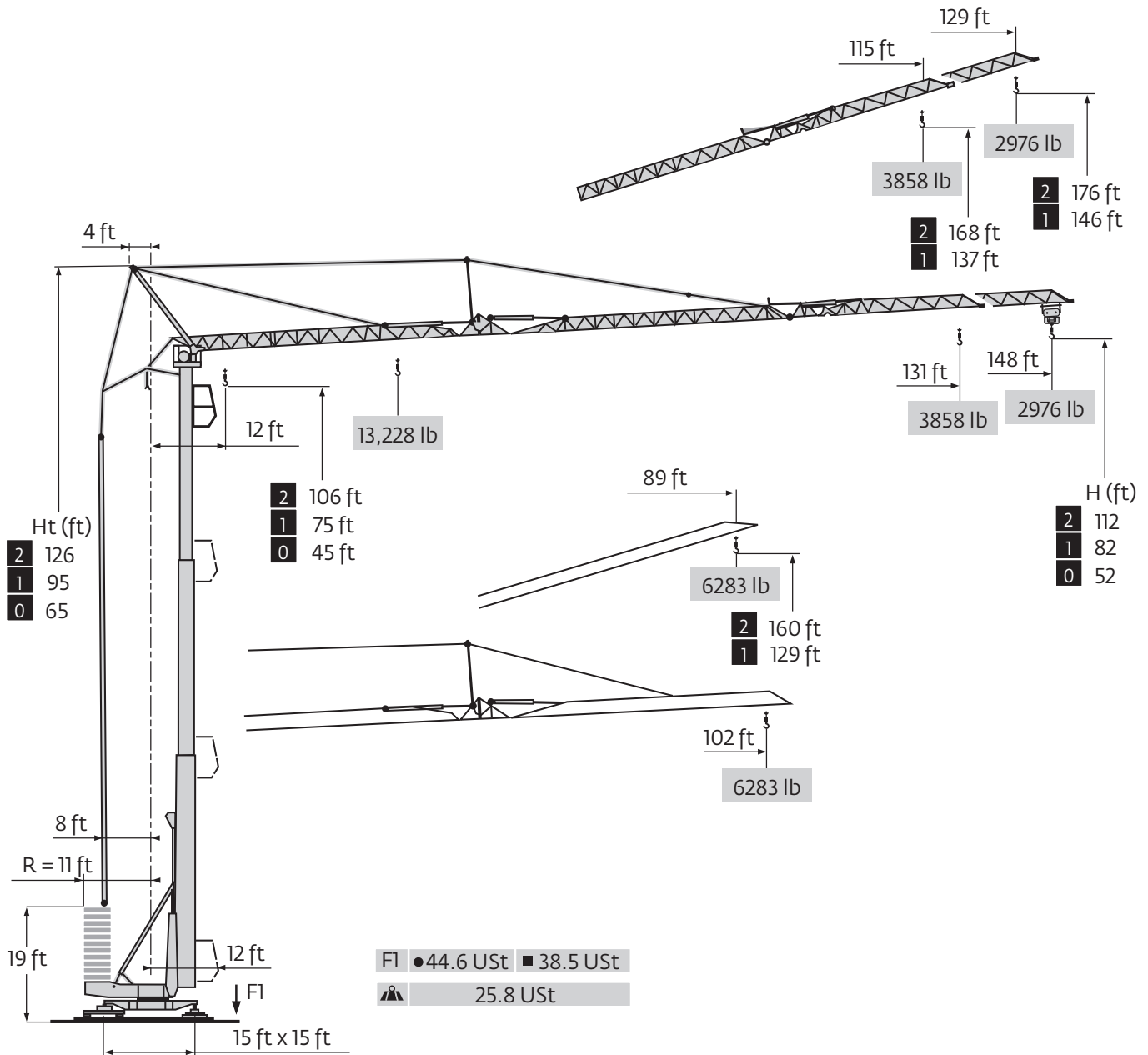
Crane with counterweight: 60 450 kg 133,267 lb

### Crane with transport equipment

| In transport with no counterweight: | DJ126M / S215M<br>25 km/h / 15.5 mph |          | SL121 / S215M<br>25 km/h / 15.5 mph |          | SL122 / J215M<br>80 km/h / 50 mph |          |
|-------------------------------------|--------------------------------------|----------|-------------------------------------|----------|-----------------------------------|----------|
|                                     | (kilograms)                          | (pounds) | (kilograms)                         | (pounds) | (kilograms)                       | (pounds) |
| Gross (P)                           | 26 950                               | 59,414   | 26 400                              | 58,201   | 26 300                            | 57,981   |
| Rear (P1)                           | 18 210                               | 40,146   | 18 300                              | 40,344   | 18 200                            | 40,124   |
| Front (P2)                          | 8740                                 | 19,268   | 8100                                | 17,857   | 8100                              | 17,857   |

NOTE: Dimensions and weights may vary due to manufacturing tolerances.

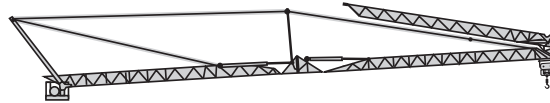
# Dimensions



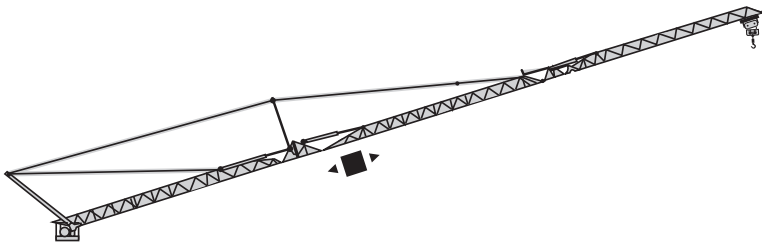
# Load charts



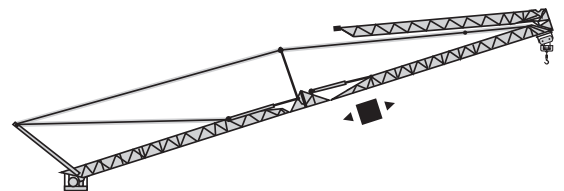
|        |    |   |        |        |        |        |      |      |      |      |      |      |      |      |      |      |      |      |      |      |      |      |      |      |      |      |    |
|--------|----|---|--------|--------|--------|--------|------|------|------|------|------|------|------|------|------|------|------|------|------|------|------|------|------|------|------|------|----|
| 148 ft | 11 | ▶ | 44     | 49     | 56     | 66     | 72   | 78   | 82   | 89   | 98   | 105  | 115  | 121  | 131  | 138  | 148  | ft   |      |      |      |      |      |      |      |      |    |
|        |    |   | 13,228 | 11,321 | 9678   | 7915   | 7022 | -    | 5975 | 5423 | 4740 | 4365 | 3880 | 3605 | 3241 | 3031 | 2756 | lb   |      |      |      |      |      |      |      |      |    |
|        |    |   | 6614   |        |        |        |      |      |      |      |      |      |      |      |      |      |      | 6195 | 5644 | 4960 | 4586 | 4101 | 3825 | 3461 | 3252 | 2976 | lb |
| 131 ft | 11 | ▶ | 47     | 49     | 56     | 66     | 72   | 82   | 85   | 89   | 98   | 105  | 115  | 121  | 131  | ft   |      |      |      |      |      |      |      |      |      |      |    |
|        |    |   | 13,228 | 12,478 | 10,681 | 8741   | 7771 | 6636 | -    | 6030 | 5280 | 4861 | 4332 | 4034 | 3638 | lb   |      |      |      |      |      |      |      |      |      |      |    |
|        |    |   | 6614   |        |        |        |      |      |      |      |      |      |      |      |      |      |      | 6250 | 5501 | 5082 | 4553 | 4255 | 3858 | lb   |      |      |    |
| 102 m  | 11 | ▶ |        | 54     | 56     | 66     | 72   | 82   | 89   | 97   | 98   | 102  | ft   |      |      |      |      |      |      |      |      |      |      |      |      |      |    |
|        |    |   |        | 13,228 | 12,621 | 10,351 | 9226 | 7893 | 7187 | -    | 6316 | 6063 | lb   |      |      |      |      |      |      |      |      |      |      |      |      |      |    |
|        |    |   |        | 6614   |        |        |      |      |      |      |      |      |      |      |      |      |      |      | 6537 | 6283 | lb   |      |      |      |      |      |    |



|        |    |   |        |        |        |      |      |      |    |      |      |      |    |  |  |  |  |      |      |      |    |  |  |  |  |  |
|--------|----|---|--------|--------|--------|------|------|------|----|------|------|------|----|--|--|--|--|------|------|------|----|--|--|--|--|--|
| 148 ft | 11 | ▶ | 46     | 49     | 56     | 66   | 72   | 82   | 83 | 89   | 98   | 102  | ft |  |  |  |  |      |      |      |    |  |  |  |  |  |
|        |    |   | 13,228 | 12,247 | 10,483 | 8576 | 7628 | 6504 | -  | 5908 | 5181 | 4960 | lb |  |  |  |  |      |      |      |    |  |  |  |  |  |
|        |    |   | 6614   |        |        |      |      |      |    |      |      |      |    |  |  |  |  | 6129 | 5401 | 5181 | lb |  |  |  |  |  |
| 131 ft | 11 | ▶ | 49     | 49     | 56     | 66   | 72   | 82   | 88 | 89   | 98   | 102  | ft |  |  |  |  |      |      |      |    |  |  |  |  |  |
|        |    |   | 13,228 | 12,985 | 11,133 | 9105 | 8102 | 6923 | -  | 6283 | 5512 | 5291 | lb |  |  |  |  |      |      |      |    |  |  |  |  |  |
|        |    |   | 6614   |        |        |      |      |      |    |      |      |      |    |  |  |  |  | 6504 | 5732 | 5512 | lb |  |  |  |  |  |



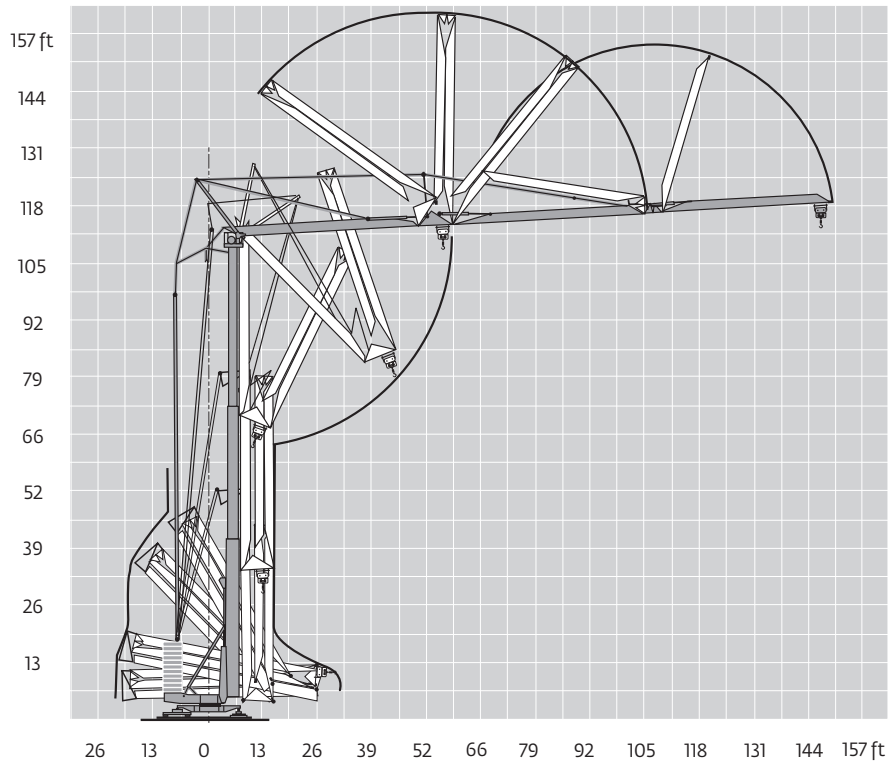
|        |    |   |      |      |      |      |      |      |      |      |      |      |    |  |  |  |  |      |      |      |      |      |      |      |      |    |  |  |  |  |  |
|--------|----|---|------|------|------|------|------|------|------|------|------|------|----|--|--|--|--|------|------|------|------|------|------|------|------|----|--|--|--|--|--|
| 148 ft | 11 | ▶ | 66   | 68   | 72   | 82   | 89   | 98   | 105  | 115  | 121  | 129  | ft |  |  |  |  |      |      |      |      |      |      |      |      |    |  |  |  |  |  |
|        |    |   | 6614 | -    | 5941 | 5049 | 4564 | 3968 | 3649 | 3230 | 2987 | 2756 | lb |  |  |  |  |      |      |      |      |      |      |      |      |    |  |  |  |  |  |
|        |    |   | 6614 |      |      |      |      |      |      |      |      |      |    |  |  |  |  | 6162 | 5269 | 4784 | 4189 | 3869 | 3450 | 3208 | 2976 | lb |  |  |  |  |  |
| 131 ft | 11 | ▶ |      | 72   | 74   | 82   | 89   | 98   | 105  | 115  | ft   |      |    |  |  |  |  |      |      |      |      |      |      |      |      |    |  |  |  |  |  |
|        |    |   |      | 6614 | -    | 5611 | 5093 | 4442 | 4079 | 3638 | lb   |      |    |  |  |  |  |      |      |      |      |      |      |      |      |    |  |  |  |  |  |
|        |    |   |      | 6614 |      |      |      |      |      |      |      |      |    |  |  |  |  |      | 5831 | 5313 | 4663 | 4299 | 3858 | lb   |      |    |  |  |  |  |  |
| 102 ft | 11 | ▶ |      | 83   | 85   | 89   | ft   |      |      |      |      |      |    |  |  |  |  |      |      |      |      |      |      |      |      |    |  |  |  |  |  |
|        |    |   |      | 6614 | -    | 6063 | lb   |      |      |      |      |      |    |  |  |  |  |      |      |      |      |      |      |      |      |    |  |  |  |  |  |
|        |    |   |      | 6614 |      |      |      |      |      |      |      |      |    |  |  |  |  |      | 6283 | lb   |      |      |      |      |      |    |  |  |  |  |  |



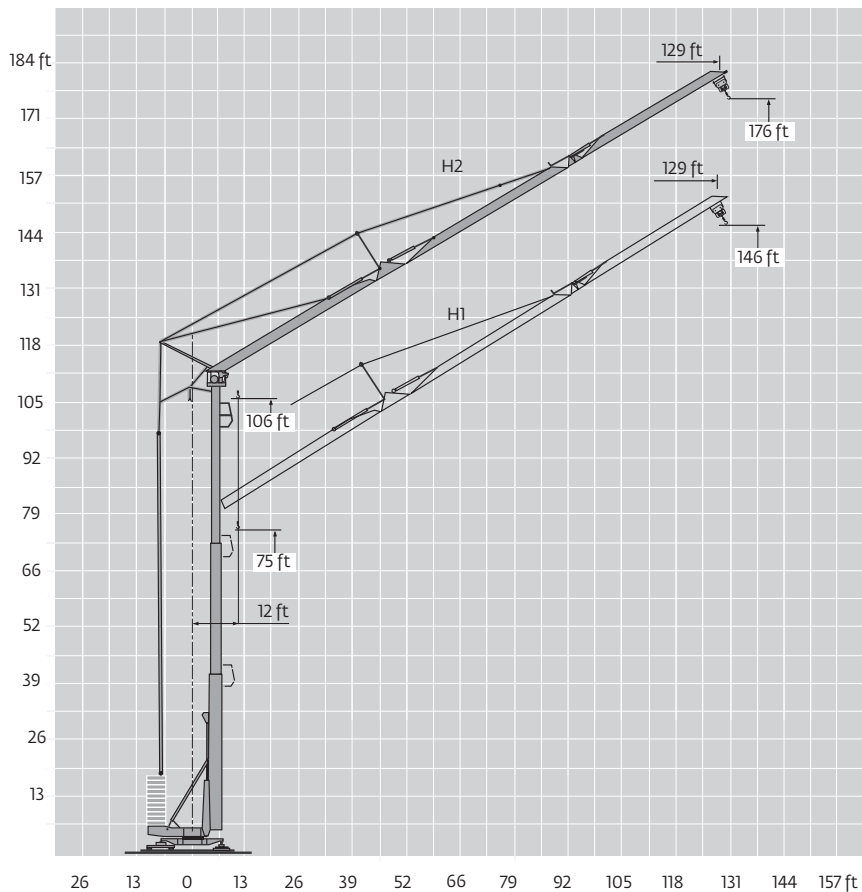
|        |    |   |      |      |    |      |      |    |  |  |  |  |  |  |  |  |  |      |      |      |    |  |  |  |  |  |
|--------|----|---|------|------|----|------|------|----|--|--|--|--|--|--|--|--|--|------|------|------|----|--|--|--|--|--|
| 148 ft | 11 | ▶ | 71   | 72   | 73 | 82   | 89   | ft |  |  |  |  |  |  |  |  |  |      |      |      |    |  |  |  |  |  |
|        |    |   | 6614 | 6471 | -  | 5501 | 4960 | lb |  |  |  |  |  |  |  |  |  |      |      |      |    |  |  |  |  |  |
|        |    |   | 6614 |      |    |      |      |    |  |  |  |  |  |  |  |  |  | 5721 | 5181 | lb   |    |  |  |  |  |  |
| 131 ft | 11 | ▶ |      | 74   | 76 | 82   | 89   | ft |  |  |  |  |  |  |  |  |  |      |      |      |    |  |  |  |  |  |
|        |    |   |      | 6614 | -  | 5864 | 5291 | lb |  |  |  |  |  |  |  |  |  |      |      |      |    |  |  |  |  |  |
|        |    |   |      | 6614 |    |      |      |    |  |  |  |  |  |  |  |  |  |      | 6085 | 5512 | lb |  |  |  |  |  |



# Crane profile and working range








HDT 80: jib raised 30°








THIS CHART IS ONLY A GUIDE AND SHOULD NOT BE USED TO OPERATE THE CRANE.

The individual crane's load chart, operating instructions and other instructional plates must be read and understood prior to operating the crane

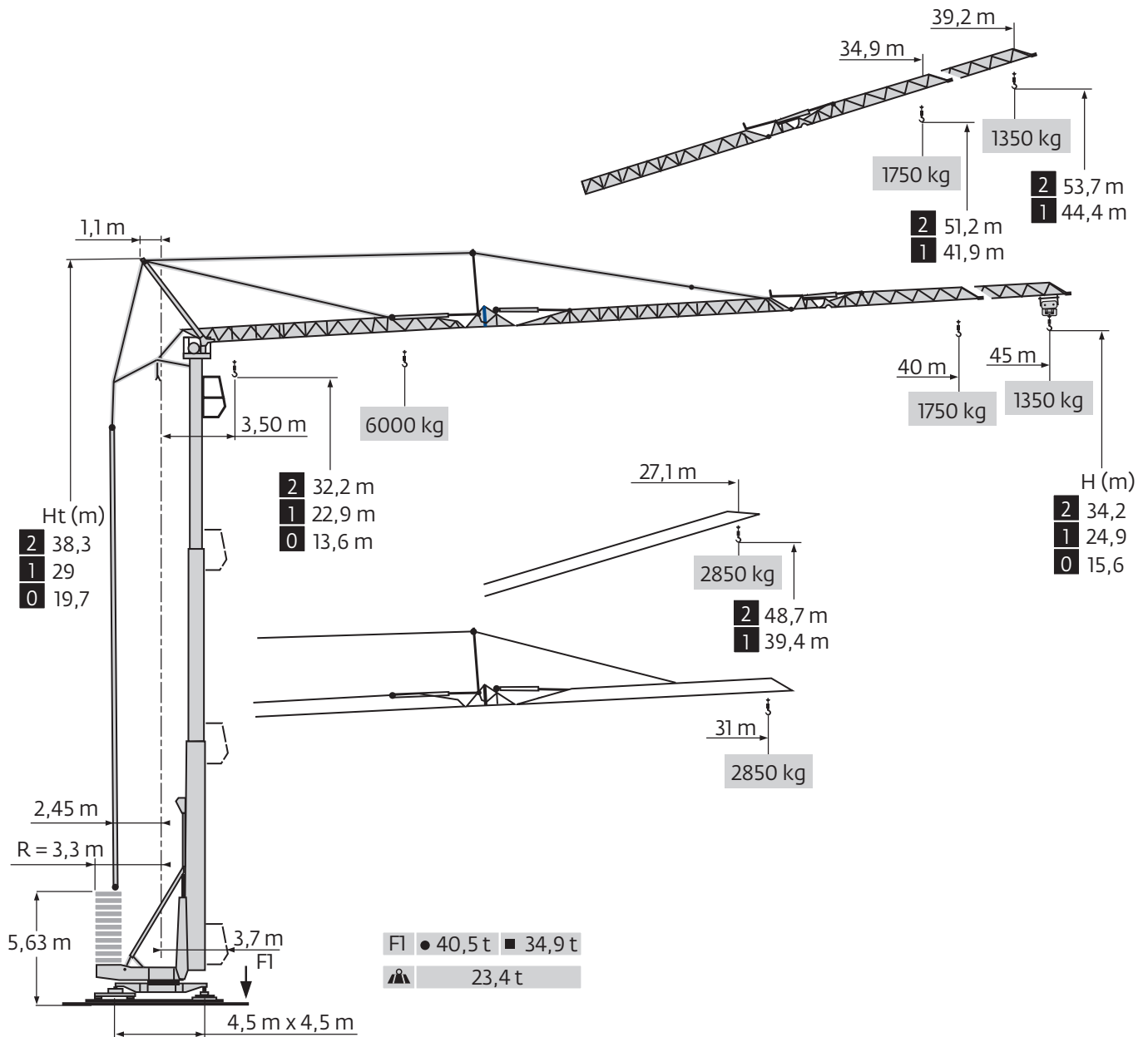
# Mechanisms

|  | 20 LVF 15 | fpm<br>lb |  |      |      |      |      |  |        |      |      |      | hp  | kW  |
|---|-----------|-----------|---|------|------|------|------|---|--------|------|------|------|-----|-----|
|   |           |           | 13  | 85   | 138  | 171  | 223  | 7   | 43     | 69   | 85   | 112  |     |     |
|   |           |           | 6614  | 6614 | 3968 | 3086 | 1543 | 13,228  | 13,228 | 7937 | 6173 | 3086 | 20  | 15  |
|  | 5 DVF 5   | fpm       | 30 - 73 - 191 (6614 lb)   |      |      |      |      | 30 - 73 - 145 (13,228 lb)   |        |      |      |      | 6.5 | 4.8 |
|  | RVF+61    | rpm       | 0 - 0.8   |      |      |      |      |   |        |      |      | 8    | 5.9 |     |

| CEI 38                |  | IEC 38 | kVA              |
|-----------------------|---|--------|------------------|
| 480V (+6% -10%) 60 Hz |   |        | 20 LVF 15 : 43 A |

|   |            |
|---|------------|
|    | Hoisting   |
|   | Trolleying |
|  | Slewing    |
|  | Traveling  |

# Metric dimensions

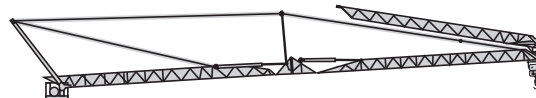


THIS CHART IS ONLY A GUIDE AND SHOULD NOT BE USED TO OPERATE THE CRANE.

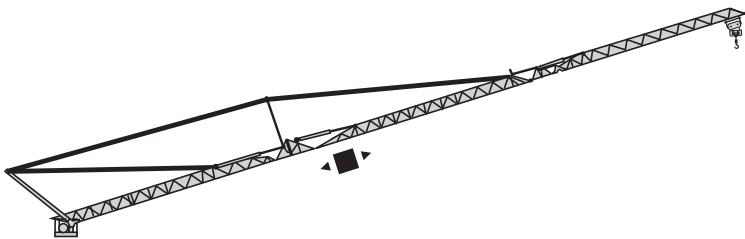
# Metric load charts



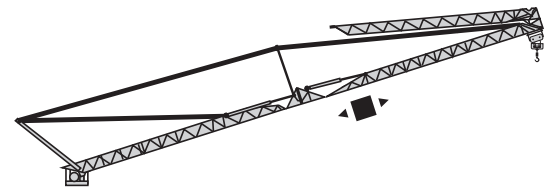
|      |       |   |      |      |      |      |      |      |      |      |      |      |      |      |      |      |    |
|------|-------|---|------|------|------|------|------|------|------|------|------|------|------|------|------|------|----|
| 45 m | 3,5 ▶ | 13,3  | 15   | 17   | 20   | 22   | 23,7 | 25   | 27   | 30   | 32   | 35   | 37   | 40   | 42   | 45   | m  |
| ▲▲▲  | □/□   | 6000  | 5135 | 4390 | 3590 | 3185 | -    | 2710 | 2460 | 2150 | 1980 | 1760 | 1635 | 1470 | 1375 | 1250 | kg |
|      | □     | 3000 2810 2560 2250 2080 1860 1735 1570 1475 1350 |      |      |      |      |      |      |      |      |      |      |      |      |      |      |    |
| 40 m | 3,5 ▶ | 14,3  | 15   | 17   | 20   | 22   | 25   | 25,8 | 27   | 30   | 32   | 35   | 37   | 40   | m    |      |    |
| ▲▲▲  | □/□   | 6000  | 5660 | 4845 | 3965 | 3525 | 3010 | -    | 2735 | 2395 | 2205 | 1965 | 1830 | 1650 | kg   |      |    |
|      | □     | 3000 2835 2495 2305 2065 1930 1750                |      |      |      |      |      |      |      |      |      |      |      |      |      |      |    |
| 31 m | 3,5 ▶ | 16,4  | 17   | 20   | 22   | 25   | 27   | 29,7 | 30   | 31   | m    |      |      |      |      |      |    |
| ▲▲▲  | □/□   | 6000  | 5725 | 4695 | 4185 | 3580 | 3260 | -    | 2865 | 2750 | kg   |      |      |      |      |      |    |
|      | □     | 3000 2965 2850                                    |      |      |      |      |      |      |      |      |      |      |      |      |      |      |    |



|      |       |                     |      |      |      |      |      |      |      |      |      |    |  |  |  |  |  |
|------|-------|---------------------|------|------|------|------|------|------|------|------|------|----|--|--|--|--|--|
| 45 m | 3,5 ▶ | 14,1                | 15   | 17   | 20   | 22   | 25   | 25,3 | 27   | 30   | 31   | m  |  |  |  |  |  |
| ▲▲▲  | □/□   | 6000                | 5555 | 4755 | 3890 | 3460 | 2950 | -    | 2680 | 2350 | 2250 | kg |  |  |  |  |  |
|      | □     | 3000 2780 2450 2350 |      |      |      |      |      |      |      |      |      |    |  |  |  |  |  |
| 40 m | 3,5 ▶ | 14,8                | 15   | 17   | 20   | 22   | 25   | 26,7 | 27   | 30   | 31   | m  |  |  |  |  |  |
| ▲▲▲  | □/□   | 6000                | 5890 | 5050 | 4130 | 3675 | 3140 | -    | 2850 | 2500 | 2400 | kg |  |  |  |  |  |
|      | □     | 3000 2950 2600 2500 |      |      |      |      |      |      |      |      |      |    |  |  |  |  |  |

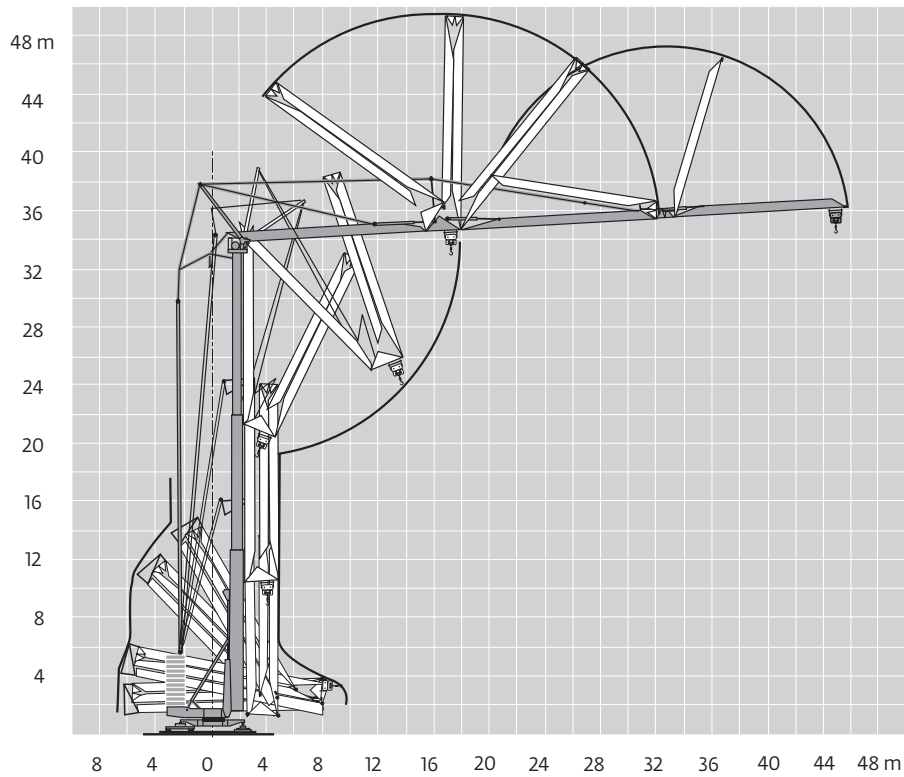


|      |       |  |      |      |      |      |      |      |      |      |      |    |  |  |  |  |  |
|------|-------|--|------|------|------|------|------|------|------|------|------|----|--|--|--|--|--|
| 45 m | 3,5 ▶ | 20,2   | 20,8 | 22   | 25   | 27   | 30   | 32   | 35   | 37   | 39,2 | m  |  |  |  |  |  |
| ▲▲▲  | □/□   | 3000   | -    | 2695 | 2290 | 2070 | 1800 | 1655 | 1465 | 1355 | 1250 | kg |  |  |  |  |  |
|      | □     | 3000 2795 2390 2170 1900 1755 1565 1455 1350 |      |      |      |      |      |      |      |      |      |    |  |  |  |  |  |
| 40 m | 3,5 ▶ | 22   | 22,6 | 25   | 27   | 30   | 32   | 34,9 | m    |      |      |    |  |  |  |  |  |
| ▲▲▲  | □/□   | 3000   | -    | 2545 | 2310 | 2015 | 1850 | 1650 | kg   |      |      |    |  |  |  |  |  |
|      | □     | 3000 2645 2410 2115 1950 1750                |      |      |      |      |      |      |      |      |      |    |  |  |  |  |  |
| 31 m | 3,5 ▶ | 25,3   | 26   | 27,1 | m    |      |      |      |      |      |      |    |  |  |  |  |  |
| ▲▲▲  | □/□   | 3000   | -    | 2750 | kg   |      |      |      |      |      |      |    |  |  |  |  |  |
|      | □     | 3000 2850                                    |      |      |      |      |      |      |      |      |      |    |  |  |  |  |  |

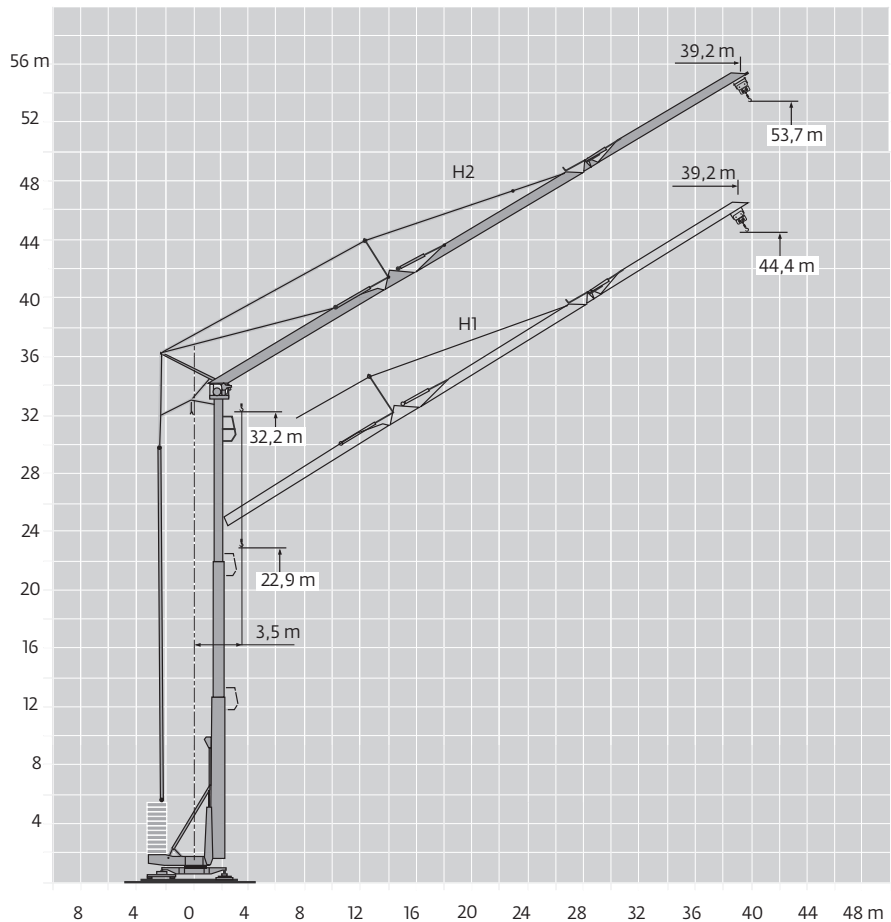


|      |       |                |      |      |      |      |    |  |  |  |  |  |  |  |  |  |  |
|------|-------|----------------|------|------|------|------|----|--|--|--|--|--|--|--|--|--|--|
| 45 m | 3,5 ▶ | 21,6           | 22   | 22,2 | 25   | 27,1 | m  |  |  |  |  |  |  |  |  |  |  |
| ▲▲▲  | □/□   | 3000           | 2935 | -    | 2495 | 2250 | kg |  |  |  |  |  |  |  |  |  |  |
|      | □     | 3000 2595 2350 |      |      |      |      |    |  |  |  |  |  |  |  |  |  |  |
| 40 m | 3,5 ▶ | 22,7           | 23,3 | 25   | 27,1 | m    |    |  |  |  |  |  |  |  |  |  |  |
| ▲▲▲  | □/□   | 3000           | -    | 2660 | 2400 | kg   |    |  |  |  |  |  |  |  |  |  |  |
|      | □     | 3000 2760 2500 |      |      |      |      |    |  |  |  |  |  |  |  |  |  |  |

# Metric crane profile and working range








HDT 80: jib raised 30°









THIS CHART IS ONLY A GUIDE AND SHOULD NOT BE USED TO OPERATE THE CRANE.

The individual crane's load chart, operating instructions and other instructional plates must be read and understood prior to operating the crane

# Metric mechanisms

|   |          |  |                       |      |      |      |  |                       |      |      |      | hp   | kW  |     |
|---|----------|---|-----------------------|------|------|------|---|-----------------------|------|------|------|------|-----|-----|
|  | 20 LVF15 | m/min   | 4                     | 26   | 42   | 52   | 68  | 2                     | 13   | 21   | 26   | 34   | 20  | 15  |
|   |          | kg  | 3000                  | 3000 | 1800 | 1400 | 700   | 6000                  | 6000 | 3600 | 2800 | 1400 |     |     |
|  | 5 DVF5   | m/min   | 9 - 22 - 58 (3000 kg) |      |      |      |   | 9 - 22 - 44 (6000 kg) |      |      |      |      | 6,5 | 4,8 |
|  | RVF+61   | rpm   | 0 → 0,8               |      |      |      |   |                       |      |      |      | 8    | 5,9 |     |

| CEI 38  IEC 38 |  |
|---|---|
| 400V (+6% -10%) 50 Hz   | 20 LVF15 : 35 kVA   |

|   |            |
|---|------------|
|    | Hoisting   |
|   | Trolleying |
|  | Slewing    |
|  | Traveling  |

# Symbols glossary



Jib



Mast



Anemometer



Swing



Outrigger



Chassis



Hydraulic equipment



Controls



Electrical requirement



Ballast



Transport axle



Ballasting derrick



Reeving



Hoist



Trolley



Jib extension

## Regional headquarters

### Manitowoc - Americas

**Manitowoc, Wisconsin, USA**

Tel: +1 920 684 6621

Fax: +1 920 683 6277

**Shady Grove, Pennsylvania, USA**

Tel: +1 717 597 8121

Fax: +1 717 597 4062

### Manitowoc - Europe, Middle East, Africa

**Ecully, France**

Tel: +33 (0)4 72 18 20 20

Fax: +33 (0)4 72 18 20 00

### Manitowoc - Asia Pacific

**Shanghai, China**

Tel: +86 21 6457 0066

Fax: +86 21 6457 4955

## Regional offices

### Americas

#### Brazil

Alphaville

#### Mexico

Monterrey

#### Chile

Santiago

### Europe, Middle East, Africa

#### Czech Republic

Netvorice

#### France

Baudemont

Cergy

Decines

#### Germany

Langenfeld

#### Hungary

Budapest

#### Italy

Parabiago

#### Netherlands

Breda

#### Poland

Warsaw

### Portugal

Baltar

### Russia

Moscow

### U.A.E.

Dubai

### U.K.

Buckingham

### Asia - Pacific

#### Australia

Brisbane

Melbourne

Sydney

#### China

Beijing

Chengdu

Guangzhou

#### India

Delhi

Hyderabad

Pune

#### Korea

Seoul

#### Philippines

Makati City

#### Singapore

## Factories

### Brazil

Alphaville

### China

TaiAn

Zhangjiagang

### France

Charlieu

La Clayette

Moulins

### Germany

Wilhelmshaven

### India

Pune

### Italy

Niella Tanaro

### Portugal

Baltar

Fânzeres

### Slovakia

Saris

### USA

Manitowoc

Port Washington

Shady Grove

This document is non-contractual. Constant improvement and engineering progress make it necessary that we reserve the right to make specification, equipment, and price changes without notice. Illustrations shown may include optional equipment and accessories and may not include all standard equipment.