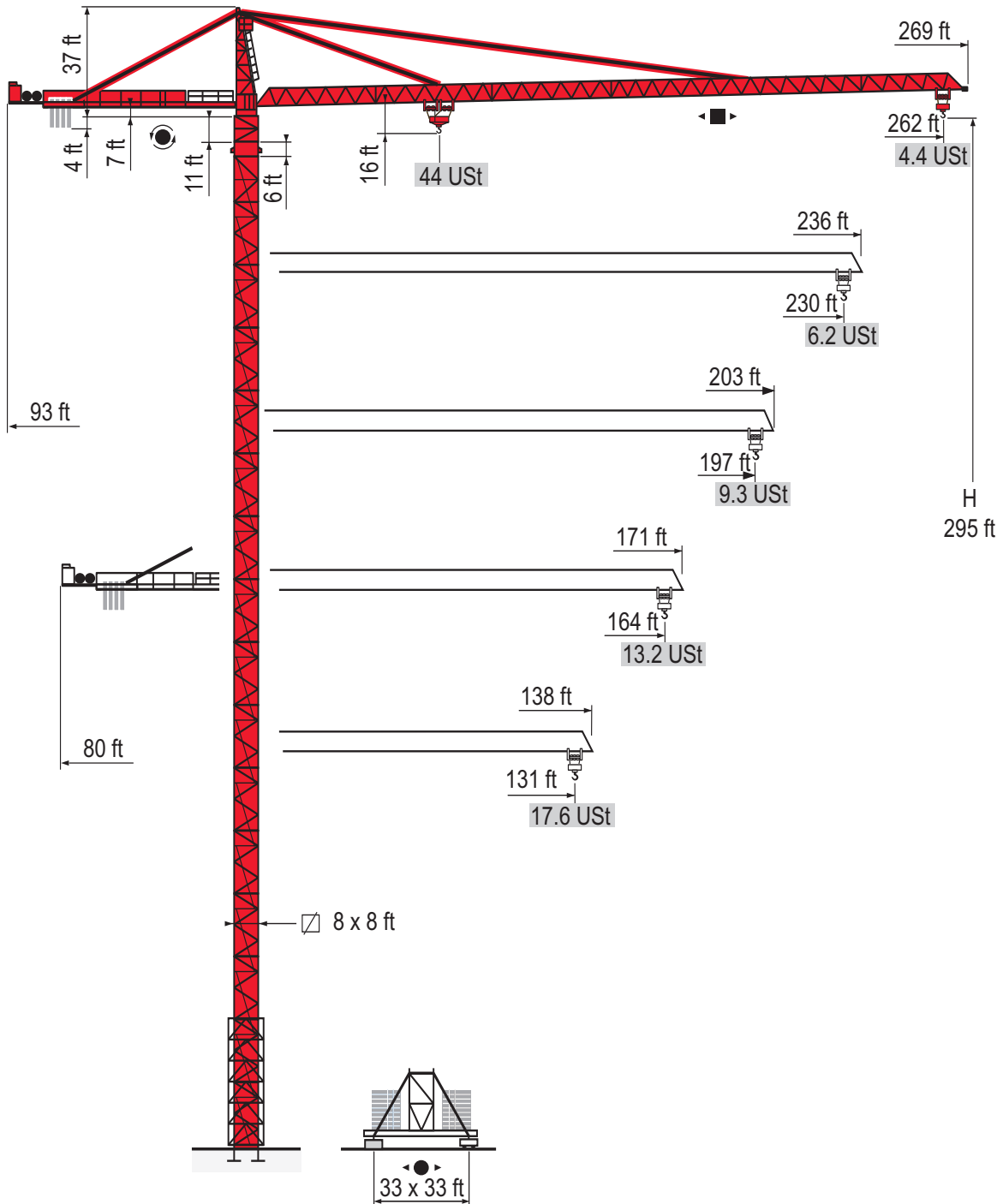


MD 560 A

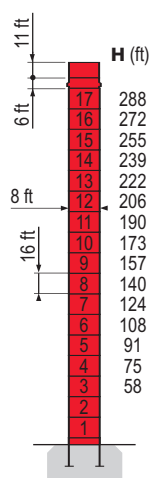


Masts / Reactions

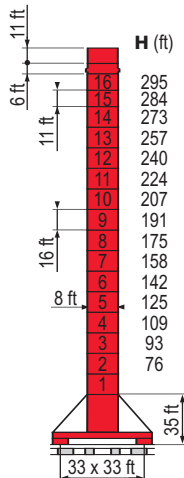
8 x 8 ft

131 - 164 - 197 ft

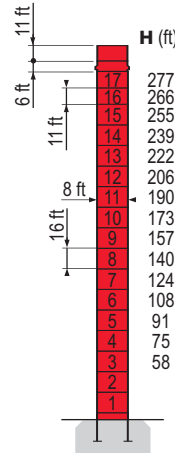
230 - 262 ft



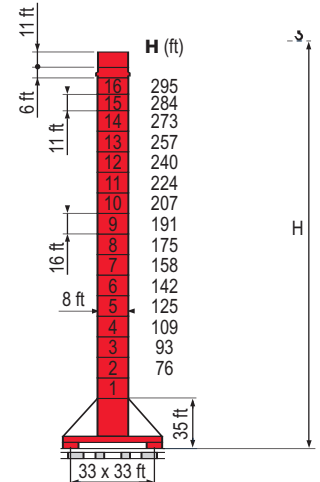
P 850 A



J 850 A



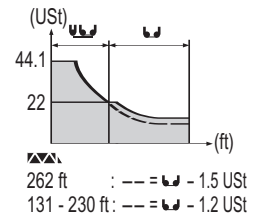
P 850 A



J 850 A

Load diagrams

262 ft	14	▶	42	50	56	66	73	78	82	89	98	105	115	131	148	164	180	197	213	230	246	262	ft
			44.1	35.9	30.8	25.1	22	22	20.9	19.1	16.9	15.5	13.9	11.8	10.1	8.8	7.0	6.8	6.1	5.4	4.9	4.4	UST
230 ft	14	▶	44	50	56	66	72	77	83	89	98	105	115	131	148	164	180	197	213	230	ft		
			44.1	38.5	33.1	27.1	24	22	22	20.5	18.1	16.8	15.1	12.8	11	9.7	8.6	7.6	6.8	6.2	UST		
197 ft	14	▶		51	56	66	72	82	89	96	98	105	115	131	148	164	180	197	ft				
				44.1	39.1	32.2	28.7	24.5	22	22	21.4	19.8	17.9	15.3	13.2	11.7	10.4	9.3	UST				
164 ft	14	▶			56	66	72	82	89	99	106	105	115	131	148	164	ft						
					44.1	36.3	32.4	27.8	25.2	22	22	20.2	19	17.3	15	13.2	UST						
131 ft	14	▶				57	66	72	82	89	101	108	105	121	131	ft							
						44.1	37	33.1	28.3	25.8	22	22	20.6	19.3	17.6	UST							



MD 560 A



F	D	GB	E	I	P
● Réactions en service	■ Reaktionskräfte in Betrieb	● Reactions in service	● Reacciones en servicio	● Reazioni in servizio	● Reações em serviço
■ Réactions hors service	■ Reaktionskräfte außer Betrieb	■ Reactions out of service	■ Reacciones fuera de servicio	■ Reazioni fuori servizio	■ Reações fora de serviço
🚚 A vide sans lest (ni train de transport) avec flèche et hauteur maximum.	🚚 Ohne Last, Ballast (und Transportachse), mit Maximalausleger und Maximalhöhe.	🚚 Without load, ballast (or transport axles), with maximum jib and maximum height.	🚚 Sin carga, sin lastre, (ni tren de transporte), flecha y altura máxima.	🚚 A vuoto, senza zavorra (ne assali di trasporto) con braccio massimo e altezza massima.	🚚 Sem carga (nem trem de transporte)- sem lastro com lança e altura máximas.
📞 Nous consulter	📞 Auf Anfrage	📞 Consult us	📞 Consultarnos	📞 Consultatevi	📞 Consultar-nos

Counter-jib ballast

		8,818 lb - 13,228 lb
		(lb)
262 ft	93 ft	52,910
230 ft	93 ft	48,501
197 ft	93 ft	48,501
164 ft	80 ft	52,910
131 ft	80 ft	35,273

Base ballast

	8 ft	J850A	131 - 164 - 197 ft		H (ft)	295	284	273	257	240	224	207	191	175	158	142	125	109
					(USt)	172	146	119	79	53	53	53	53	53	53	53	53	53

	8 ft	J850A	230 - 262 ft		H (ft)	295	284	273	257	240	224	207	191	175	158	142	125	109
					(USt)	198	172	132	106	66	53	53	53	53	53	53	53	53

Mechanisms

MD 560 A 400 V 50 Hz												ch - PS hp	kW			
	250 LCC 100	ft/min	151	197	249	315	354	75	98	125	157	177	250	180	1,601 ft	
		USt	22	16.5	11	5.5	2.8	44.1	33.1	22	11	5.5				
	RVF 183 Optima +	tr/min U/min rpm	0 → 0.7										3 x 12	3 x 9		
	15 DVF 16	ft/min	0 → 108 (44.1 USt) - 0 → 164 (22 USt) - 0 → 220 (11 USt) - 0 → 328 (2.8 USt)										15	11		
J 850 A		ft/min														
CEI 38		IEC 38					kVA									
400 V (+6% -10%) 50 Hz		250 LCC : 325 kVA														

MD 560 A 480 V 60 Hz												ch - PS hp	kW			
	250 LCC 100	ft/min	151	197	249	315	354	75	98	125	157	177	250	180	1,601 ft	
		USt	22	16.5	11	5.5	2.8	44.1	33.1	22	11	5.5				
	215 LBR 100	ft/min	12/125	20/197	31/315	50/499		6/62	10/98	16/157	25/249		215	158	1,903 ft	
		USt	22	13.3	7.8	4.3		44.1	26.6	15.5	8.6					
	RVF 183 Optima +	tr/min U/min rpm	0 → 1										3 x 15	3 x 11		
	15 DVF 16	ft/min	0 → 164 (22 t) 0 → 220 (8.3 t) 0 → 328 (2.8 t)					0 → 108 (44.1 t) 0 → 220 (9 t) 0 → 328 (2.8 t)					15	11		
J 850 A		ft/min														
CEI 38		IEC 38					kVA									
480 V (+6% -10%) 60 Hz		250 LCC : 380 kVA - 215 LBR : 240 kVA														

MD 560 A



	F	Levage		D	Heben		GB	Hoisting		E	Elevación		I	Sollevamento		P	Elevação
		Distribution			Katzfahren			Trolleying			Distribución			Distribuzione			Distribuição
		Orientation			Schwenken			Slewing			Orientación			Rotazione			Rotação
		Translation			Kranfahren			Travelling			Traslación			Traslazione			Translação



Document commercial non contractuel. Pour toute information technique se référer à la notice correspondante.

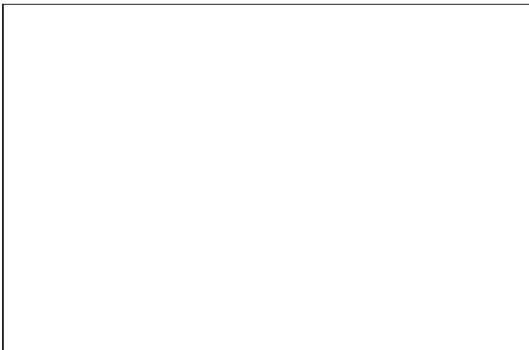
Unverbindliches Vertriebsdokument. Für technische Informationen, siehe die entsprechenden Anweisungen.

This commercial document is not legally binding. For any technical information, please refer to the corresponding instructions.

Documento commercial no contractuel. Para cualquier información técnica, ver la noticia correspondiente.

Documento commerciale non vincolante, per tutte le informazioni tecniche fare riferimento al catalogo istruzioni.

Documento comercial não contratual. Para qualquer informação técnica complementar consultar as respectivas instruções.



Americas
Tel : +1 888 479 7278
Tel : +1 717 593 2000

Europe – Middle East – Africa
Tel : +33 (0) 4 72 81 50 00
Tel : +44 (0) 191 522 2000

Asia – Pacific
Tel : +65 6264 1188
Fax : +65 6862 4040

www.manitowoc.com

18, rue de Charbonnières - B.P.173
69132 ECULLY Cedex - France

Tél. : +33 (0) 4 72 81 20 20
Fax. : +33 (0) 4 72 81 20 00
www.manitowoc.com

Constant improvement and engineering progress make it necessary that we reserve the right to make specification, equipment and price changes without notice. Illustrations shown may include optional equipment and accessories, and may not include all standard equipment.

Réalisation Sedoc